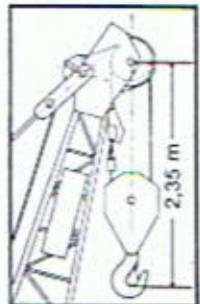


FLY-JIB



BOOM

Pulley block assembly



Set-up :

H : Boom head : 3,80 m  
F : Boom foot : 4,20 m

BOOM 30 m  
H - F - 5 extensions (5 + 5 + 5 + 5 + 2)

BOOM 25 m  
H - F - 4 extensions (5 + 5 + 5 + 2)

BOOM 20 m  
H - F - 3 extensions (5 + 5 + 2)

BOOM 17 m  
H - F - 3 extensions (5 + 2 + 2)

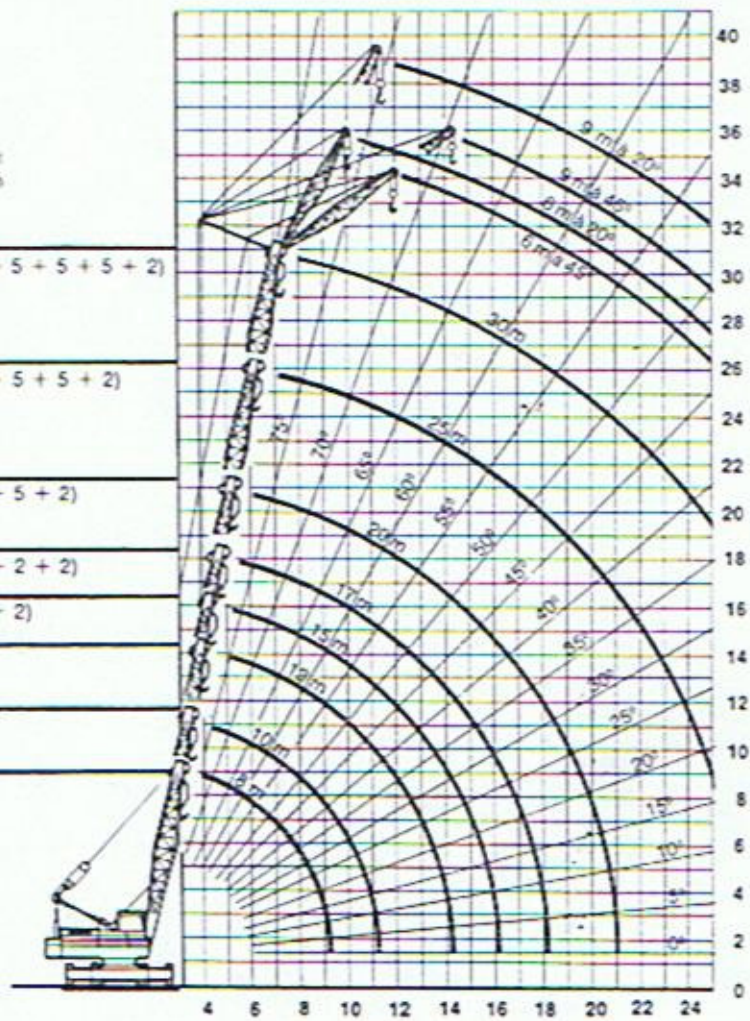
BOOM 15 m  
H - F - 2 extensions (5 + 2)

BOOM 13 m  
H - F - 1 extension (5)

BOOM 10 m  
H - F - 1 extension (2)

BOOM 8 m  
H - F

Boom : 4 - 6 - 8 rope pulley block (380 kg with 8 ropes)  
2 rope pulley block (150 kg)  
Fly-jib : 2 rope pulley block (120 kg)

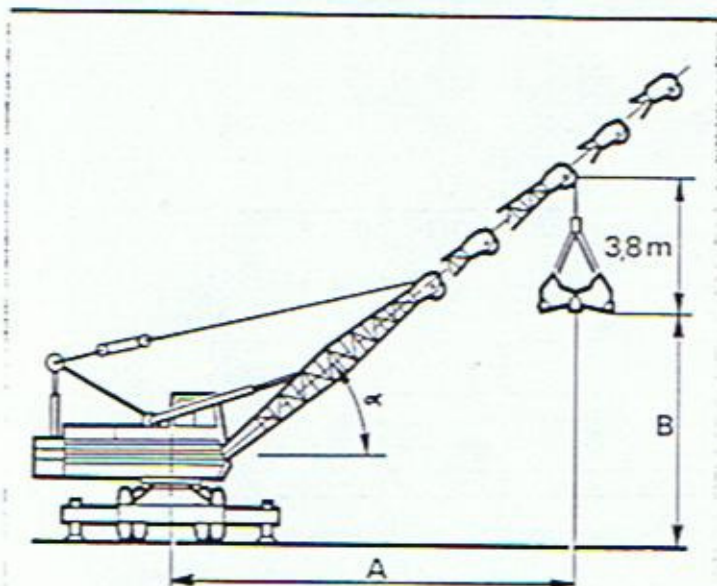


TABLES OF LOAD IN TONNES (weight of pulley block included)  
ON OUTRIGGERS FULLY EXTENDED - slewing on 360°

Reach on load in m	BOOM 8 m		BOOM 10 m		BOOM 13 m		BOOM 15 m		BOOM 17 m		BOOM 20 m		BOOM 25 m		BOOM 30 m	
	75 %	85 %	75 %	85 %	75 %	85 %	75 %	85 %	75 %	85 %	75 %	85 %	75 %	85 %	75 %	85 %
3	32	32														
3.5	30.3	30.3														
4	26.3	26.3	26.25	26.25												
5	21.3	21.3	21.25	21.25	21.2	21.2	21.15	21.15	19.1	19.1						
6	17.8	17.8	17.75	17.75	17.7	17.7	17.6	17.6	17.55	17.55	15.7	15.7				
7	13.15	14.85	13.1	14.8	13.05	14.75	13	14.65	12.95	14.6	12.9	14.55	11.3	11.3		
8	10.6	11.95	10.55	11.9	10.5	11.85	10.45	11.8	10.4	11.75	10.35	11.65	10.3	10.85	7.35	7.35
9			8.9	10.05	8.85	9.95	8.8	9.9	8.75	9.85	8.7	9.8	8.65	9.75	7.1	7.1
10			7.65	8.6	7.6	8.55	7.55	8.5	7.5	8.45	7.45	8.4	7.4	8.35	6.85	6.85
11					6.65	7.5	6.6	7.4	6.55	7.35	6.5	7.3	6.45	7.25	6.2	6.6
12					5.8	6.5	5.75	6.45	5.7	6.4	5.65	6.35	5.6	6.3	5.35	6.05
13							5.15	5.8	5.1	5.7	5.05	5.65	5	5.6	4.75	5.35
14									4.6	5.15	4.55	5.1	4.5	5.05	4.25	4.8
15									4.15	4.65	4.1	4.6	4.05	4.55	3.8	4.25
16											3.65	4.1	3.6	4	3.35	3.75
17											3.25	3.6	3.2	3.55	2.95	3.3
18													2.9	3.25	2.65	2.95
19													2.65	2.95	2.4	2.7
20													2.45	2.7	2.2	2.45
21													2.25	2.5	2	2.25
22															1.85	2.05
23															1.7	1.9
24															1.6	1.8
25															1.55	1.7

# 32.01

## GRAB (CLAMSHELL) EQUIPMENT

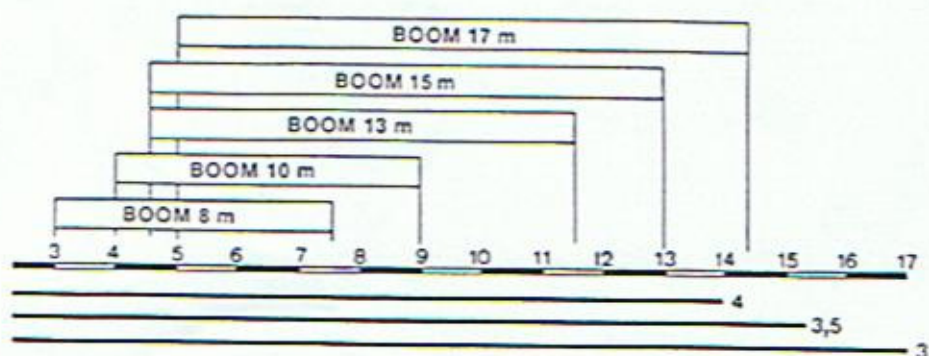


2000 cm<sup>3</sup> MOTOR  
 MAXIMUM LIFTING SPEED WITH LOAD AND A FULL  
 BUCKET : 50 m/mn.  
 MAXIMUM LOAD : 4000 kg

BOOM	$\alpha = 40^\circ$	$\alpha = 50^\circ$	$\alpha = 60^\circ$
8 m	7,4 m	6,5 m	5,3 m
10 m	9 m	7,7 m	6,3 m
13 m	11,3 m	9,7 m	7,8 m
15 m	12,8 m	11 m	8,8 m
17 m	14,3 m	12,2 m	9,8 m
8 m	3,1 m	4,1 m	4,9 m
10 m	4,4 m	5,6 m	6,6 m
13 m	6,3 m	7,9 m	9,2 m
15 m	7,6 m	9,5 m	11 m
17 m	8,9 m	11 m	12,7 m

TYPE	SAND	COAL	BEETS
4000 kg	1000/1500 l	1900/2200 l	
3500	900/1250	1700/1900	1900 l
3000	775/1100	1500/1700	1600
2500	650/ 900	1200/1400	1400
2000	550/ 750	950/1100	1150
1750	450/ 600	850/ 950	975

## WORKING AREA ACCORDING TO BOOM LENGTH



NOTE : P.P.M. reserves the right to modify the above specifications which are given as a guide only.

SIREN 726 820 236  
 Head office :  
 La Saule 71300 MONTCEAU-LES-MINES  
 Commercial department :  
 11, Villa de Saxe - 75007 PARIS  
 Tél : 734.01.94 — Télex : 250725